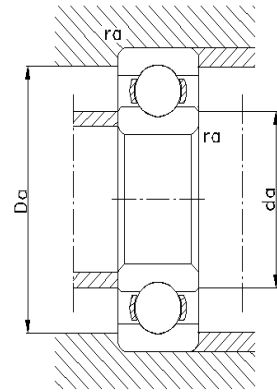
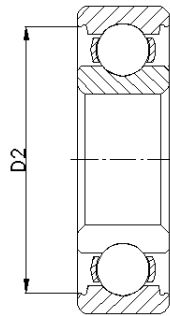
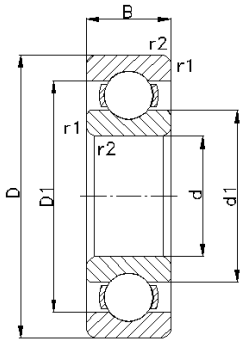


# GENERAL CATALOGUE



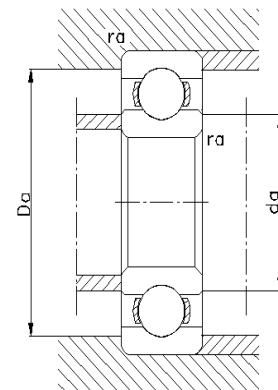
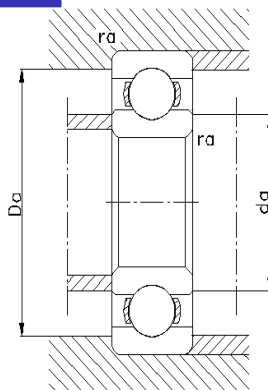
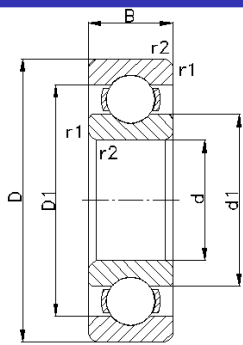
**Iranian Bearing Tavrigh  
International Co.**

# Deep groove ball bearings single row-(open)



Principal dimensions			Basic load ratings		Fatigue load limit $P_u$	Speed ratings		Mass	Dimensions		Abutment and fillet dimensions					Designations
d	D	B	C	$C_0$		r/min	r/min		kg	$d_1$	$D_1$	$D_2$	$r_{1,2}$ min	$d_a$ min	$D_a$ max	
mm	mm	mm	N	N	N				mm	mm	mm	mm	mm	mm	mm	
10	26	8	3695	1650	85	30000	36000	0.019	14.2	20	24.8	0.6	12	24	0.3	6000
	30	9	5400	2360	100	24000	30000	0.031	17.0	23.2	24.8	0.6	14.2	25.8	0.6	6200
	35	11	8520	3400	143	21000	27000	0.053	17.5	26.9	28.7	0.6	14.2	30.8	0.6	6300
12	28	8	5400	2360	100	28000	32000	0.021	17.0	23.2	24.8	0.3	14.0	26.0	0.3	6001
	32	10	6890	3100	132	22000	28000	0.037	18.2	25.9	27.4	0.6	16	28	0.6	6201
	37	12	9750	4150	176	19000	24000	0.060	19.5	29.7	31.5	1	17	32	1	6301
15	32	19	5850	2850	120	25000	30000	0.030	20.5	26.7	28.2	0.3	17	30	0.3	6002
	35	11	7800	3750	160	19000	24000	0.045	21.5	29.2	30.4	0.6	19	31	0.6	6202
	42	13	11400	5400	228	17000	20000	0.082	23.7	33.9	36.3	1	20	37	1	6302
17	35	10	6370	3250	137	22000	24000	0.038	23.0	29.2	31.2	0.3	19	33	0.3	6003
	40	12	9560	4750	200	17000	20000	0.065	24.2	32.9	35	0.6	21	36	0.6	6203
	47	14	13500	6550	275	16000	19000	0.12	26.5	37.6	39.6	1	22	42	1	6303
20	42	12	9950	5000	212	19000	21000	0.067	27.2	34.8	37.2	0.6	23.2	38.8	0.6	6004
	47	14	12700	6550	280	15000	18000	0.11	28.5	38.7	40.6	1	25	42	1	6204
	52	15	15900	7800	335	13000	16000	0.14	30.3	42.1	44.8	1.1	26.5	45.5	1	6304
25	47	12	11900	6550	275	15000	17000	0.078	32.0	40.0	42.2	0.6	28.2	43.8	0.6	6005
	52	15	14000	7800	335	12000	15000	0.13	34	44.2	46.3	1	30	47	1	6205
	62	17	22500	11600	490	11000	14000	0.23	36.6	50.9	52.7	1.1	31.5	55.5	1	6305
30	55	13	13800	8300	355	14000	16000	0.12	38.2	46.8	49.0	1.0	34.6	50.4	1	6006
	62	16	19500	11200	475	10000	13000	0.20	40.3	52.1	54.1	1	35	57	1	6206
	72	19	28100	16000	670	9000	11000	0.35	44.6	59.9	61.9	1.1	36.5	65.5	1	6306
35	62	14	16800	10200	440	11000	14000	0.15	43.7	53.3	55.7	1.0	39.6	57.4	1	6007
	72	17	25500	15300	655	9000	11000	0.29	46.9	60.6	62.7	1.1	41.5	65.5	1	6207
	80	21	33200	19000	815	8500	10000	0.46	49.5	66.1	69.2	1.5	43	72	1.5	6307
40	68	15	17800	11000	490	10000	12500	0.19	49.2	58.8	61.1	1.0	44.6	63.4	1	6008
	80	18	30700	19000	800	8500	10000	0.37	52.6	67.9	69.8	1.1	46.5	73.5	1	6208
	90	23	41000	24000	1020	7500	9000	0.63	56.1	74.7	77.7	1.5	48	82	1.5	6308
45	75	16	22100	14600	640	9000	11000	0.24	54.7	65.3	67.8	1.0	50.8	69.2	1	6009
	85	19	33200	21600	915	7500	9000	0.41	57.6	72.9	75.2	1.1	51.5	78.5	1	6209
	100	25	52700	31500	1340	6700	8000	0.83	62.1	83.7	86.7	1.5	53	92	1.5	6309
50	80	16	22900	16000	710	8000	10000	0.26	59.7	70.3	72.8	1	54.6	75.4	1	6010
	90	20	35100	23200	980	7000	8500	0.46	62.5	78.1	81.7	1.1	56.5	83.5	1	6210
	110	27	65000	38000	1600	6000	7000	1.1	68.7	91.1	95.2	2	61	99	1	6310
55	90	18	28100	21200	900	7500	9000	0.39	66.3	79.1	81.5	1.1	61.5	83.5	1	6011
	100	21	46200	29000	1250	6500	7500	0.61	69	85.8	89.4	1.5	64	91	1.5	6211
	120	29	74100	45000	1900	5500	6500	1.35	75.3	99.5	104	2	66	109	2	6311
60	95	18	30700	23200	980	6300	7500	0.41	71.3	83.7	86.5	1.1	66	89	1	6012
	110	22	55300	36000	1530	6000	6500	0.78	75.5	94.6	98	1.5	69	101	1.5	6212
	130	31	85200	51000	2200	5000	6000	1.70	81.8	108	113	2.1	72	118	2	6312

# Deep groove ball bearings single row-(open)



Principal dimensions	Basic load ratings		Fatigue load limit $P_u$	Speed ratings		Mass	Dimensions		Abutment and fillet dimensions			Designations				
	Dynamic	static		lubrication grease	oil		$d_1$	$D_1$	$D_2$	$r_{1,2}$ min	$d_a$ min		$D_a$ max	$r_a$ max		
d	D	B	C	$C_0$	r/min	r/min	kg	$\approx$	$\approx$	$\approx$	mm	mm	mm	mm	Type	
65	100	18	23600	19600	1060	6300	7500	0.44	76.3	89.1	91.5	2	71.5	93.5	1	6013
	120	23	43000	34000	1730	5300	6300	0.99	83.3	103	106	2.5	73	112	1.5	6213
	140	33	71000	56000	2500	4800	5600	2.10	88.3	118	122	3.5	76	129	2	6313
70	110	20	29000	24500	1320	6000	7000	0.60	82.8	97.6	99.9	2	76.5	103.5	1	6014
	125	24	47500	37500	1900	5000	6000	1.05	87	109	111	2.5	78	117	1.5	6214
	150	35	80000	63000	2750	4500	5300	2.50	94.9	126	130	3.5	81	139	2	6314
75	115	20	30500	26000	1430	5600	6700	0.64	87.8	103	105	2	81.5	108.5	1	6015
	130	25	51000	40500	2040	4800	5600	1.20	92	114	117	2.5	83	122	1.5	6215
	160	37	86500	72000	3000	4300	5000	3.00	101	135	139	3.5	86	149	1	6315
80	125	22	36500	31500	1660	5300	6300	0.85	94.4	112	115	2	86.5	118.5	1	6016
	140	26	54000	45000	2200	4500	5300	1.40	101	123	127	3	89	131	2	6216
	170	39	95000	80000	3250	3800	4500	3.60	108	143	147	3.5	91	159	2	6316
85	130	22	38000	33500	1760	5000	6000	0.89	99.4	117	120	2	91.5	123.5	1	6017
	150	28	64000	53000	2500	4300	5000	1.8	106	131	136	3	94	141	2	6217
	180	41	102000	90000	3350	3600	4300	4.25	114	152	156	4	98	167	2.5	6317
90	140	24	45000	39000	1960	4800	5600	1.15	105	125	129	2.5	98	132	1.5	6018
	160	30	73500	62000	2800	3800	4500	2.15	112	139	143	3	99	151	2	6218
95	145	24	46500	41500	2080	4500	5300	1.20	110	130	134	2.5	103	137	1.5	6019
	170	32	83000	69500	3000	3600	4300	2.60	118	148	152	3.5	106	159	2	6219
100	150	24	63700	54000	2040	9500	5600	1.25	115	135	139	1.5	107	143	1.5	6020
	180	34	127000	93000	3350	7500	4800	3.15	124	155	160	2.1	112	168	2	6220
105	160	26	76100	65500	2400	8500	5300	1.6	122	143	147	2	116	149	2	6021
110	170	28	85200	73500	2600	8000	5000	1.95	129	151	156	2	119	161	2	6022
120	180	28	88400	80000	2750	7500	4800	2.1	139	161	166	2	129	171	2	6024



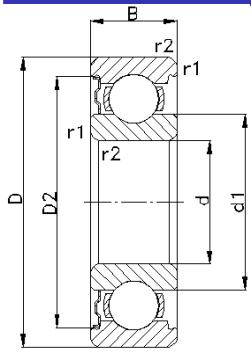
## *Iranian Bearing Tavrigh International Co.*

**Factory:** Tabriz- Akhula Industrial Zone  
Iranian Bearing Tavrigh International Co.  
Tel : 041-33108051-54-56 Fax : 041-331082059  
Postal Code: 5356151495

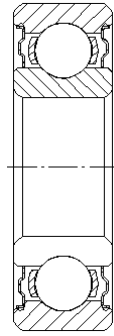
**Central office:** Tehran- Sadat Abad-Sarv St. No, 57  
Tel: 021-33946339-40 Fax: 021-33998781

Postal Code: 1143659631

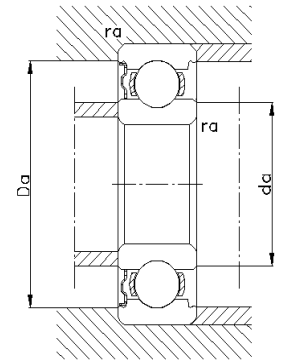
# Deep groove ball bearings single row, with shield(s)



with full outer ring shoulders

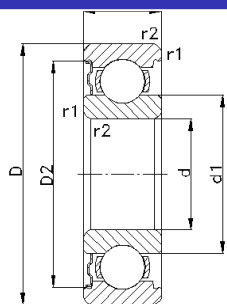


with two Z shields



d	Principal dimensions			Basic load ratings		Fatigue load limit $P_u$	Speed ratings		Mass	Dimensions				Abutment and fillet dimensions			Designations
	D	B	C	Dynamic	static		lubrication	grease		oil	$d_1$	$D_1$	$D_2$	$r_{1,2}$	$d_a$	$D_a$	
mm	mm	mm	mm	N	N	N	r/min	r/min	kg	mm	mm	mm	mm	mm	mm	mm	
10	26	8	3695	1650	85	30000	36000	0.019	14.2	20	24.8	0.6	12	24	0.3	6000 2Z	
	30	9	5400	2360	100	24000	30000	0.031	17.0	23.2	24.8	0.6	14.2	25.8	0.6	6200 2Z	
	35	11	8520	3400	143	21000	27000	0.053	17.5	26.9	28.7	0.6	14.2	30.8	0.6	6300 2Z	
12	28	8	5400	2360	100	28000	32000	0.021	17.0	23.2	24.8	0.3	14.0	26.0	0.3	6001 2Z	
	32	10	6890	3100	132	22000	28000	0.037	18.2	25.9	27.4	0.6	16	28	0.6	6201 2Z	
	37	12	9750	4150	176	19000	24000	0.060	19.5	29.7	31.5	1	17	32	1	6301 2Z	
15	32	19	5850	2850	120	25000	30000	0.030	20.5	26.7	28.2	0.3	17	30	0.3	6002 2Z	
	35	11	7800	3750	160	19000	24000	0.045	21.5	29.2	30.4	0.6	19	31	0.6	6202 2Z	
	42	13	11400	5400	228	17000	20000	0.082	23.7	33.9	36.3	1	20	37	1	6302 2Z	
17	35	10	6370	3250	137	22000	24000	0.038	23.0	29.2	31.2	0.3	19	33	0.3	6003 2Z	
	40	12	9560	4750	200	17000	20000	0.065	24.2	32.9	35	0.6	21	36	0.6	6203 2Z	
	47	14	13500	6550	275	16000	19000	0.12	26.5	37.6	39.6	1	22	42	1	6303 2Z	
20	42	12	9950	5000	212	19000	21000	0.067	27.2	34.8	37.2	0.6	23.2	38.8	0.6	6004 2Z	
	47	14	12700	6550	280	15000	18000	0.11	28.5	38.7	40.6	1	25	42	1	6204 2Z	
	52	15	15900	7800	335	13000	16000	0.14	30.3	42.1	44.8	1.1	26.5	45.5	1	6304 2Z	
25	47	12	11900	6550	275	15000	17000	0.078	32.0	40.0	42.2	0.6	28.2	43.8	0.6	6005 2Z	
	52	15	14000	7800	335	12000	15000	0.13	34	44.2	46.3	1	30	47	1	6205 2Z	
	62	17	22500	11600	490	11000	14000	0.23	36.6	50.9	52.7	1.1	31.5	55.5	1	6305 2Z	
30	55	13	13800	8300	355	14000	16000	0.12	38.2	46.8	49.0	1.0	34.6	50.4	1	6006 2Z	
	62	16	19500	11200	475	10000	13000	0.20	40.3	52.1	54.1	1	35	57	1	6206 2Z	
	72	19	28100	16000	670	9000	11000	0.35	44.6	59.9	61.9	1.1	36.5	65.5	1	6306 2Z	
35	62	14	16800	10200	440	11000	14000	0.15	43.7	53.3	55.7	1.0	39.6	57.4	1	6007 2Z	
	72	17	25500	15300	655	9000	11000	0.29	46.9	60.6	62.7	1.1	41.5	65.5	1	6207 2Z	
	80	21	33200	19000	815	8500	10000	0.46	49.5	66.1	69.2	1.5	43	72	1.5	6307 2Z	
40	68	15	17800	11000	490	10000	12500	0.19	49.2	58.8	61.1	1.0	44.6	63.4	1	6008 2Z	
	80	18	30700	19000	800	8500	10000	0.37	52.6	67.9	69.8	1.1	46.5	73.5	1	6208 2Z	
	90	23	41000	24000	1020	7500	9000	0.63	56.1	74.7	77.7	1.5	48	82	1.5	6308 2Z	
45	75	16	22100	14600	640	9000	11000	0.24	54.7	65.3	67.8	1.0	50.8	69.2	1	6009 2Z	
	85	19	33200	21600	915	7500	9000	0.41	57.6	72.9	75.2	1.1	51.5	78.5	1	6209 2Z	
	100	25	52700	31500	1340	6700	8000	0.83	62.1	83.7	86.7	1.5	53	92	1.5	6309 2Z	
50	80	16	22900	16000	710	8000	10000	0.26	59.7	70.3	72.8	1	54.6	75.4	1	6010 2Z	
	90	20	35100	23200	980	7000	8500	0.46	62.5	78.1	81.7	1.1	56.5	83.5	1	6210 2Z	
	110	27	65000	38000	1600	6000	7000	1.1	68.7	91.1	95.2	2	61	99	1	6310 2Z	
55	90	18	28100	21200	900	7500	9000	0.39	66.3	79.1	81.5	1.1	61.5	83.5	1	6011 2Z	
	100	21	46200	29000	1250	6500	7500	0.61	69	85.8	89.4	1.5	64	91	1.5	6211 2Z	
	120	29	74100	45000	1900	5500	6500	1.35	75.3	99.5	104	2	66	109	2	6311 2Z	
60	95	18	30700	23200	980	6300	7500	0.41	71.3	83.7	86.5	1.1	66	89	1	6012 2Z	
	110	22	55300	36000	1530	6000	6500	0.78	75.5	94.6	98	1.5	69	101	1.5	6212 2Z	
	130	31	85200	51000	2200	5000	6000	1.70	81.8	108	113	2.1	72	118	2	6312 2Z	

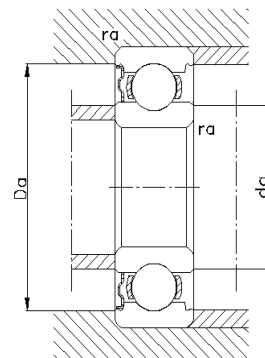
# Deep groove ball bearings single row, with shield(s)



with one Z shield



with two Z shields



Principal dimensions			Basic load ratings		Fatigue load limit $P_u$	Speed ratings		Mass	Dimensions		$D_2$ $\approx$	$r_{1,2}$ min	Abutment and fillet dimensions			Designations
d	D	B	C	$C_0$		grease	oil		$d_1$ $\approx$	$D_1$ $\approx$			$d_a$ min	$D_a$ max	$r_a$ max	
mm	mm	mm	N	N	N	r/min	r/min	kg	mm	mm	mm	mm	mm	mm		
65	100	18	23600	19600	1060	6300	7500	0.44	76.3	89.1	91.5	2	71.5	93.5	1	6013 2Z
	120	23	43000	34000	1730	5300	6300	0.99	83.3	103	106	2.5	73	112	1.5	6213 2Z
	140	33	71000	56000	2500	4800	5600	2.10	88.3	118	122	3.5	76	129	2	6313 2Z
70	110	20	29000	24500	1320	6000	7000	0.60	82.8	97.6	99.9	2	76.5	103.5	1	6014 2Z
	125	24	47500	37500	1900	5000	6000	1.05	87	109	111	2.5	78	117	1.5	6214 2Z
	150	35	80000	63000	2750	4500	5300	2.50	94.9	126	130	3.5	81	139	2	6314 2Z
75	115	20	30500	26000	1430	5600	6700	0.64	87.8	103	105	2	81.5	108.5	1	6015 2Z
	130	25	51000	40500	2040	4800	5600	1.20	92	114	117	2.5	83	122	1.5	6215 2Z
	160	37	86500	72000	3000	4300	5000	3.00	101	135	139	3.5	86	149	1	6315 2Z
80	125	22	36500	31500	1660	5300	6300	0.85	94.4	112	115	2	86.5	118.5	1	6016 2Z
	140	26	54000	45000	2200	4500	5300	1.40	101	123	127	3	89	131	2	6216 2Z
	170	39	95000	80000	3250	3800	4500	3.60	108	143	147	3.5	91	159	2	6316 2Z
85	130	22	38000	33500	1760	5000	6000	0.89	99.4	117	120	2	91.5	123.5	1	6017 2Z
	150	28	64000	53000	2500	4300	5000	1.8	106	131	136	3	94	141	2	6217 2Z
	180	41	102000	90000	3350	3600	4300	4.25	114	152	156	4	98	167	2.5	6317 2Z
90	140	24	45000	39000	1960	4800	5600	1.15	105	125	129	2.5	98	132	1.5	6018 2Z
	160	30	73500	62000	2800	3800	4500	2.15	112	139	143	3	99	151	2	6218 2Z
95	145	24	46500	41500	2080	4500	5300	1.20	110	130	134	2.5	103	137	1.5	6019 2Z
	170	32	83000	69500	3000	3600	4300	2.60	118	148	152	3.5	106	159	2	6219 2Z
100	150	24	63700	54000	2040	9500	5600	1.25	115	135	139	1.5	107	143	1.5	6020 2Z
	180	34	127000	93000	3350	7500	4800	3.15	124	155	160	2.1	112	168	2	6220 2Z
105	160	26	76100	65500	2400	8500	5300	1.6	122	143	147	2	116	149	2	6021 2Z
110	170	28	85200	73500	2600	8000	5000	1.95	129	151	156	2	119	161	2	6022 2Z
120	180	28	88400	80000	2750	7500	4800	2.1	139	161	166	2	129	171	2	6024 2Z



***Iranian Bearing  
Tavrigh  
International Co.***

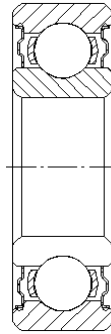
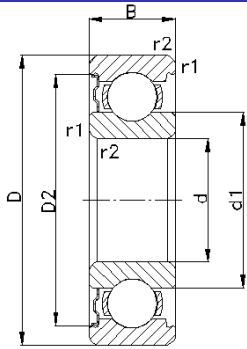
**Factory:** Tabriz- Akhula Industrial Zone  
Iranian Bearing Tavrigh International Co.  
Tel : 041-33108051-54-56 Fax : 041-331082059  
Postal Code: 5356151495

**Central office:** Tehran- Sadat Abad-Sarv St. No, 57  
Tel: 021-33946339-40 Fax: 021-33998781

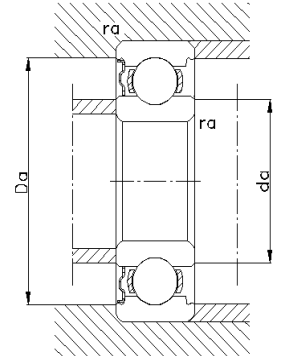
Postal Code: 1143659631



# Deep groove ball bearings single row, with seal(s)



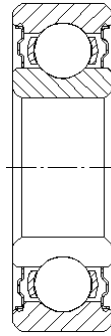
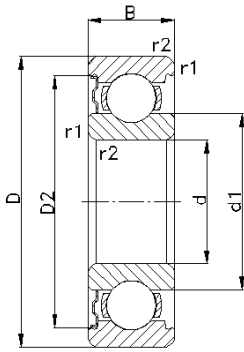
With two RS2 , Seals



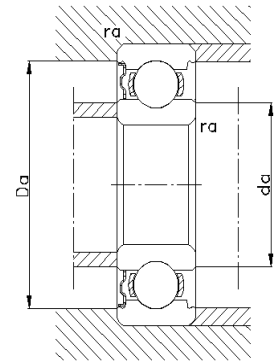
With one RS1 , Seal

Principal dimensions			Basic load ratings		Fatigue load limit $P_u$	Speed ratings		Mass	Dimensions		Abutment and fillet dimensions			Designations		
d	D	B	C	$C_0$		oil	grease		$d_1$	$D_1$	$D_2$	$r_{1,2}$	$d_a$		$D_a$	$r_a$
mm	mm	mm	N	N	N	r/min	r/min	kg	mm	mm	mm	mm	mm	mm		
10	26	8	3695	1650	85	30000	36000	0.019	14.2	20	24.8	0.6	12	24	0.3	6000 2RS
	30	9	5400	2360	100	24000	30000	0.031	17.0	23.2	24.8	0.6	14.2	25.8	0.6	6200 2RS
	35	11	8520	3400	143	21000	27000	0.053	17.5	26.9	28.7	0.6	14.2	30.8	0.6	6300 2RS
12	28	8	5400	2360	100	28000	32000	0.021	17.0	23.2	24.8	0.3	14.0	26.0	0.3	6001 2RS
	32	10	6890	3100	132	22000	28000	0.037	18.2	25.9	27.4	0.6	16	28	0.6	6201 2RS
	37	12	9750	4150	176	19000	24000	0.060	19.5	29.7	31.5	1	17	32	1	6301 2RS
15	32	19	5850	2850	120	25000	30000	0.030	20.5	26.7	28.2	0.3	17	30	0.3	6002 2RS
	35	11	7800	3750	160	19000	24000	0.045	21.5	29.2	30.4	0.6	19	31	0.6	6202 2RS
	42	13	11400	5400	228	17000	20000	0.082	23.7	33.9	36.3	1	20	37	1	6302 2RS
17	35	10	6370	3250	137	22000	24000	0.038	23.0	29.2	31.2	0.3	19	33	0.3	6003 2RS
	40	12	9560	4750	200	17000	20000	0.065	24.2	32.9	35	0.6	21	36	0.6	6203 2RS
	47	14	13500	6550	275	16000	19000	0.12	26.5	37.6	39.6	1	22	42	1	6303 2RS
20	42	12	9950	5000	212	19000	21000	0.067	27.2	34.8	37.2	0.6	23.2	38.8	0.6	6004 2RS
	47	14	12700	6550	280	15000	18000	0.11	28.5	38.7	40.6	1	25	42	1	6204 2RS
	52	15	15900	7800	335	13000	16000	0.14	30.3	42.1	44.8	1.1	26.5	45.5	1	6304 2RS
25	47	12	11900	6550	275	15000	17000	0.078	32.0	40.0	42.2	0.6	28.2	43.8	0.6	6005 2RS
	52	15	14000	7800	335	12000	15000	0.13	34	44.2	46.3	1	30	47	1	6205 2RS
	62	17	22500	11600	490	11000	14000	0.23	36.6	50.9	52.7	1.1	31.5	55.5	1	6305 2RS
30	55	13	13800	8300	355	14000	16000	0.12	38.2	46.8	49.0	1.0	34.6	50.4	1	6006 2RS
	62	16	19500	11200	475	10000	13000	0.20	40.3	52.1	54.1	1	35	57	1	6206 2RS
	72	19	28100	16000	670	9000	11000	0.35	44.6	59.9	61.9	1.1	36.5	65.5	1	6306 2RS
35	62	14	16800	10200	440	11000	14000	0.15	43.7	53.3	55.7	1.0	39.6	57.4	1	6007 2RS
	72	17	25500	15300	655	9000	11000	0.29	46.9	60.6	62.7	1.1	41.5	65.5	1	6207 2RS
	80	21	33200	19000	815	8500	10000	0.46	49.5	66.1	69.2	1.5	43	72	1.5	6307 2RS
40	68	15	17800	11000	490	10000	12500	0.19	49.2	58.8	61.1	1.0	44.6	63.4	1	6008 2RS
	80	18	30700	19000	800	8500	10000	0.37	52.6	67.9	69.8	1.1	46.5	73.5	1	6208 2RS
	90	23	41000	24000	1020	7500	9000	0.63	56.1	74.7	77.7	1.5	48	82	1.5	6308 2RS
45	75	16	22100	14600	640	9000	11000	0.24	54.7	65.3	67.8	1.0	50.8	69.2	1	6009 2RS
	85	19	33200	21600	915	7500	9000	0.41	57.6	72.9	75.2	1.1	51.5	78.5	1	6209 2RS
	100	25	52700	31500	1340	6700	8000	0.83	62.1	83.7	86.7	1.5	53	92	1.5	6309 2RS
50	80	16	22900	16000	710	8000	10000	0.26	59.7	70.3	72.8	1	54.6	75.4	1	6010 2RS
	90	20	35100	23200	980	7000	8500	0.46	62.5	78.1	81.7	1.1	56.5	83.5	1	6210 2RS
	110	27	65000	38000	1600	6000	7000	1.1	68.7	91.1	95.2	2	61	99	1	6310 2RS
55	90	18	28100	21200	900	7500	9000	0.39	66.3	79.1	81.5	1.1	61.5	83.5	1	6011 2RS
	100	21	46200	29000	1250	6500	7500	0.61	69	85.8	89.4	1.5	64	91	1.5	6211 2RS
	120	29	74100	45000	1900	5500	6500	1.35	75.3	99.5	104	2	66	109	2	6311 2RS
60	95	18	30700	23200	980	6300	7500	0.41	71.3	83.7	86.5	1.1	66	89	1	6012 2RS
	110	22	55300	36000	1530	6000	6500	0.78	75.5	94.6	98	1.5	69	101	1.5	6212 2RS
	130	31	85200	51000	2200	5000	6000	1.70	81.8	108	113	2.1	72	118	2	6312 2RS

# Deep groove ball bearings single row, with seal(s)



With two RS2 Seals



With one RS1 Seal

Principal dimensions			Basic load ratings		Fatigue load limit $P_u$	Speed ratings		Mass	Dimensions		$D_2$	$r_{1,2}$ min	Abutment and fillet dimensions			Designations
d	D	B	C	$C_0$		r/min	r/min		kg	$d_1$			$D_1$	$d_a$	$D_a$	
mm	mm	mm	N	N	N				mm	mm	mm	mm	mm			
65	100	18	23600	19600	1060	6300	7500	0.44	76.3	89.1	91.5	2	71.5	93.5	1	6013 2RS
	120	23	43000	34000	1730	5300	6300	0.99	83.3	103	106	2.5	73	112	1.5	6213 2RS
	140	33	71000	56000	2500	4800	5600	2.10	88.3	118	122	3.5	76	129	2	6313 2RS
70	110	20	29000	24500	1320	6000	7000	0.60	82.8	97.6	99.9	2	76.5	103.5	1	6014 2RS
	125	24	47500	37500	1900	5000	6000	1.05	87	109	111	2.5	78	117	1.5	6214 2RS
	150	35	80000	63000	2750	4500	5300	2.50	94.9	126	130	3.5	81	139	2	6314 2RS
75	115	20	30500	26000	1430	5600	6700	0.64	87.8	103	105	2	81.5	108.5	1	6015 2RS
	130	25	51000	40500	2040	4800	5600	1.20	92	114	117	2.5	83	122	1.5	6215 2RS
	160	37	86500	72000	3000	4300	5000	3.00	101	135	139	3.5	86	149	1	6315 2RS
80	125	22	36500	31500	1660	5300	6300	0.85	94.4	112	115	2	86.5	118.5	1	6016 2RS
	140	26	54000	45000	2200	4500	5300	1.40	101	123	127	3	89	131	2	6216 2RS
	170	39	95000	80000	3250	3800	4500	3.60	108	143	147	3.5	91	159	2	6316 2RS
85	130	22	38000	33500	1760	5000	6000	0.89	99.4	117	120	2	91.5	123.5	1	6017 2RS
	150	28	64000	53000	2500	4300	5000	1.8	106	131	136	3	94	141	2	6217 2RS
	180	41	102000	90000	3350	3600	4300	4.25	114	152	156	4	98	167	2.5	6317 2RS
90	140	24	45000	39000	1960	4800	5600	1.15	105	125	129	2.5	98	132	1.5	6018 2RS
	160	30	73500	62000	2800	3800	4500	2.15	112	139	143	3	99	151	2	6218 2RS
	170	32	83000	69500	3000	3600	4300	2.60	118	148	152	3.5	106	159	2	6219 2RS
100	150	24	63700	54000	2040	9500	5600	1.25	115	135	139	1.5	107	143	1.5	6020 2RS
	180	34	127000	93000	3350	7500	4800	3.15	124	155	160	2.1	112	168	2	6220 2RS
105	160	26	76100	65500	2400	8500	5300	1.6	122	143	147	2	116	149	2	6021 2RS
110	170	28	85200	73500	2600	8000	5000	1.95	129	151	156	2	119	161	2	6022 2RS
120	180	28	88400	80000	2750	7500	4800	2.1	139	161	166	2	129	171	2	6024 2RS



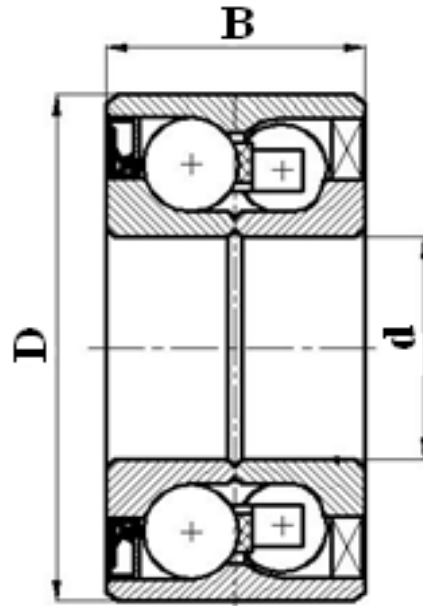
***Iranian Bearing  
Tavrigh  
International Co.***

**Factory:** Tabriz- Akhula Industrial Zone  
Iranian Bearing Tavrigh International Co.  
Tel : 041-33108051-54-56 Fax : 041-331082059  
Postal Code: 5356151495

**Central office:** Tehran- Sadat Abad-Sarv St. No, 57  
Tel: 021-33946339-40 Fax: 021-33998781

Postal Code: 1143659631

## Double row angular contact Ball Bearing



Item	Principal Dimensions (mm)			Designations
	d	D	B	
1	42	82	36	DAC 428236
2	35	65	35	DAC 356535



***Iranian Bearing  
Tavrigh  
International Co.***

**Factory:** Tabriz- Akhula Industrial Zone  
Iranian Bearing Tavrigh International Co.  
Tel : 041-33108051-54-56 Fax : 041-331082059  
Postal Code: 5356151495

**Central office:** Tehran- Sadat Abad-Sarv St. No, 57  
Tel: 021-33946339-40 Fax: 021-33998781

Postal Code: 1143659631